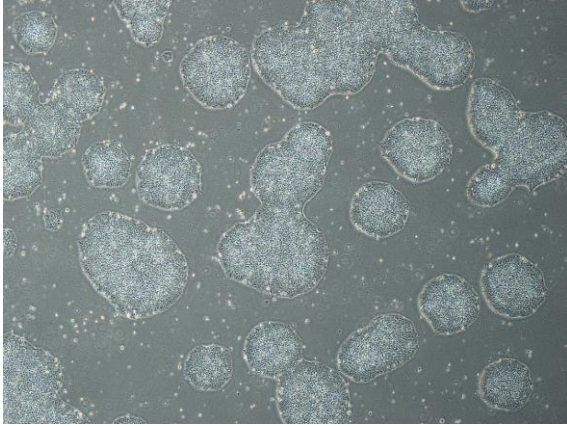
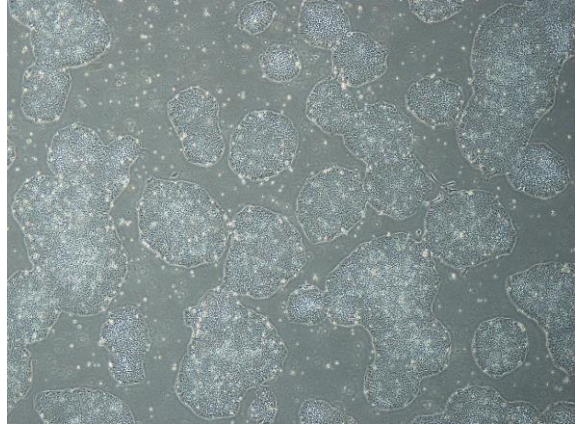


## 【 CiRA-j-1136 】 Morphology of iPSC colonies

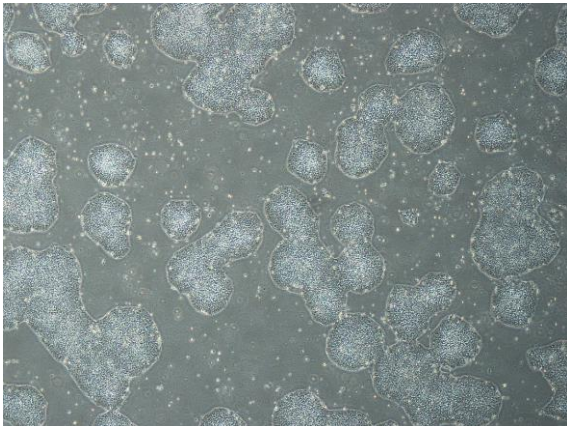
CiRA-j-1136-A: passage-3



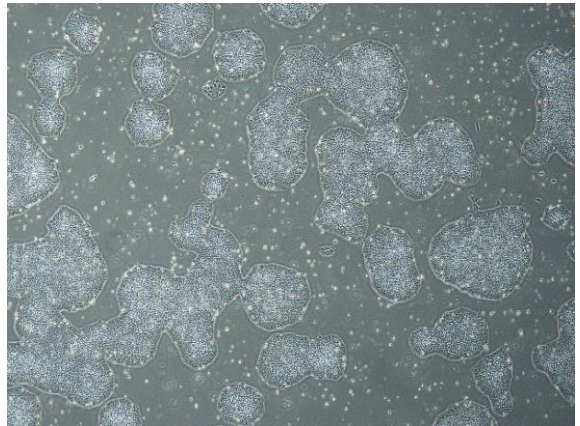
CiRA-j-1136-B: passage-3



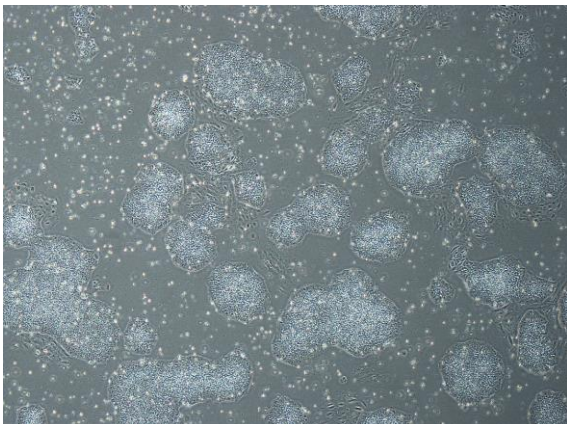
CiRA-j-1136-C: passage-3



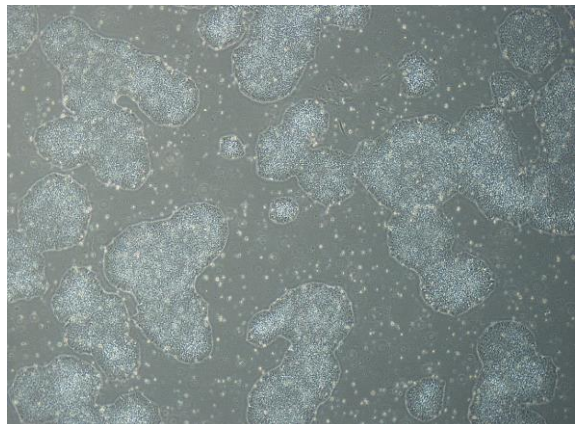
CiRA-j-1136-D: passage-3



CiRA-j-1136-E: passage-3



CiRA-j-1136-F: passage-4



( All images were captured at 4x magnification )